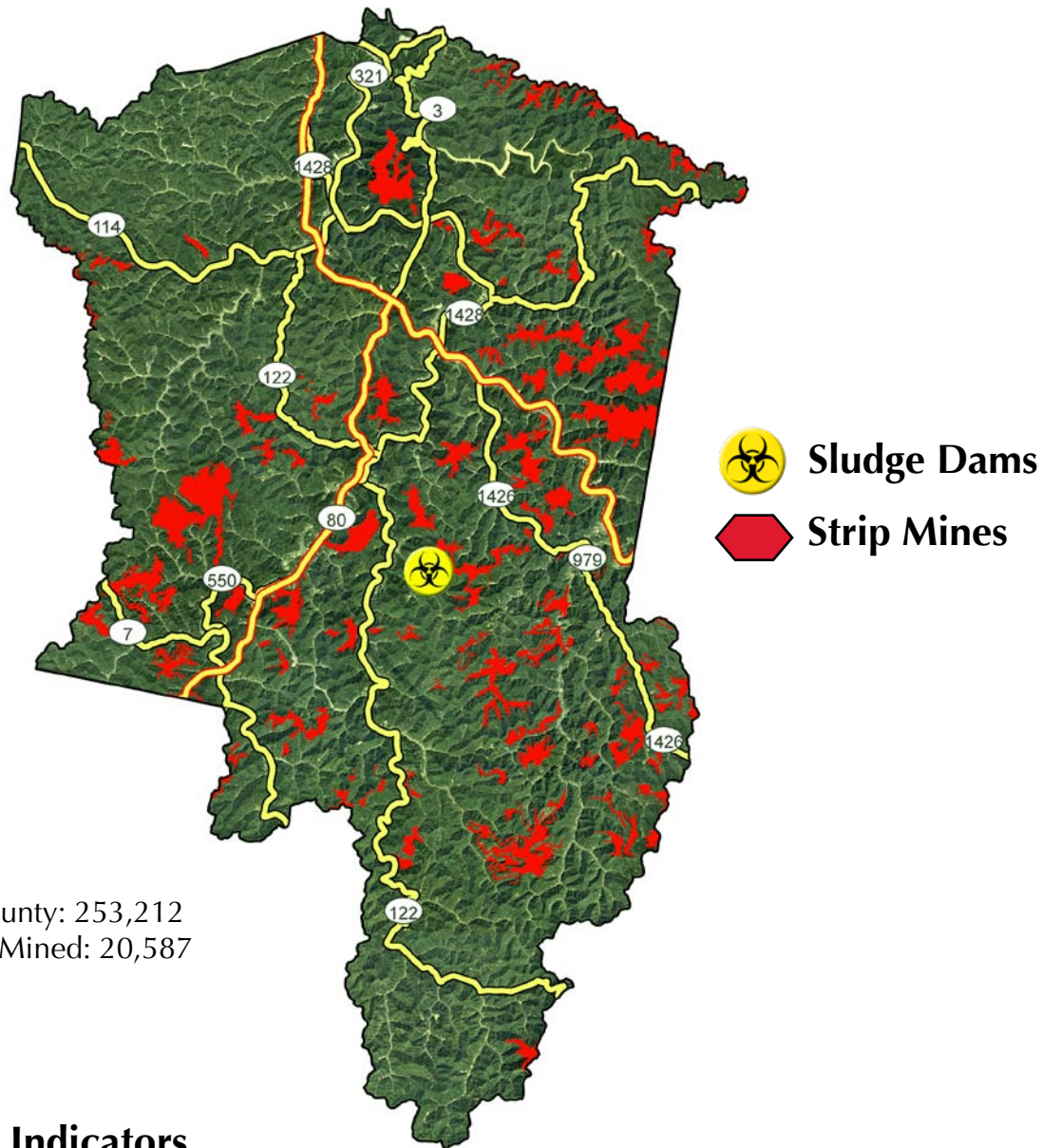


Floyd County

Mining jobs down **82%** between 1980 and 2005



Total Acreage of County: 253,212
 Min. Acres Surface Mined: 20,587

Quality of Life Indicators

	1980	2005	% Change
Total Population:	48,783	42,316	-13.3%
Total Coal Production (mst)	5,600,567	3,039,041	-45.7%
Average Income as % of US average	76%	63%	-17.1%.
Mining Job	3595	647	-82.0%
Mining Jobs as % of total jobs	26.3%	4.1%	-84.5%

Percent Living in Poverty in 2000: 31.2% (US Average: 16.5%)
 Percent Unemployed in March, 2007: 6.5% (US Average: 4.5%)



**KENTUCKIANS FOR THE
 COMMONWEALTH**
Action for Justice