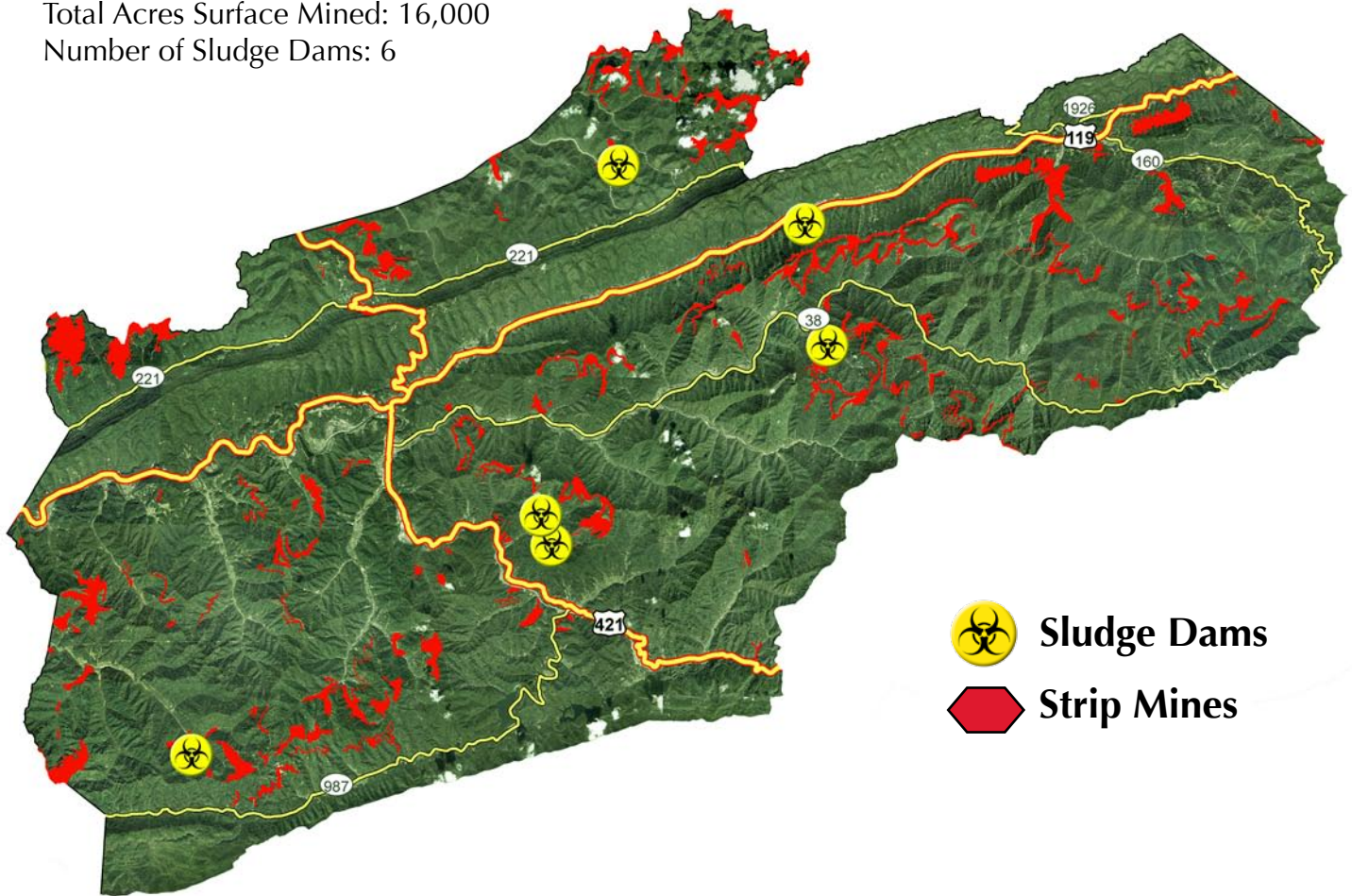


Harlan County

33% of county residents live in poverty

Total Acreage of County: 300,000
 Total Acres Surface Mined: 16,000
 Number of Sludge Dams: 6



 Sludge Dams
 Strip Mines

Quality of Life Indicators

	1980	2005	% Change
Total Population:	41,985	31,671	-24.6%
Total Coal Production (mst)	12,259,447	10,967,698	-10.5%
Average Income as % of US average	72%	56%	-22.2%
Mining Jobs	4132	1438	-65.2%
Mining Jobs as % of total jobs	31.9%	14.3%	-58.7%

Percent Living in Poverty in 2000: 33.1% (US Average: 16.5%)
 Percent Unemployed in March, 2007: 8.2% (US Average: 4.5%)



KENTUCKIANS FOR THE COMMONWEALTH
Action for Justice