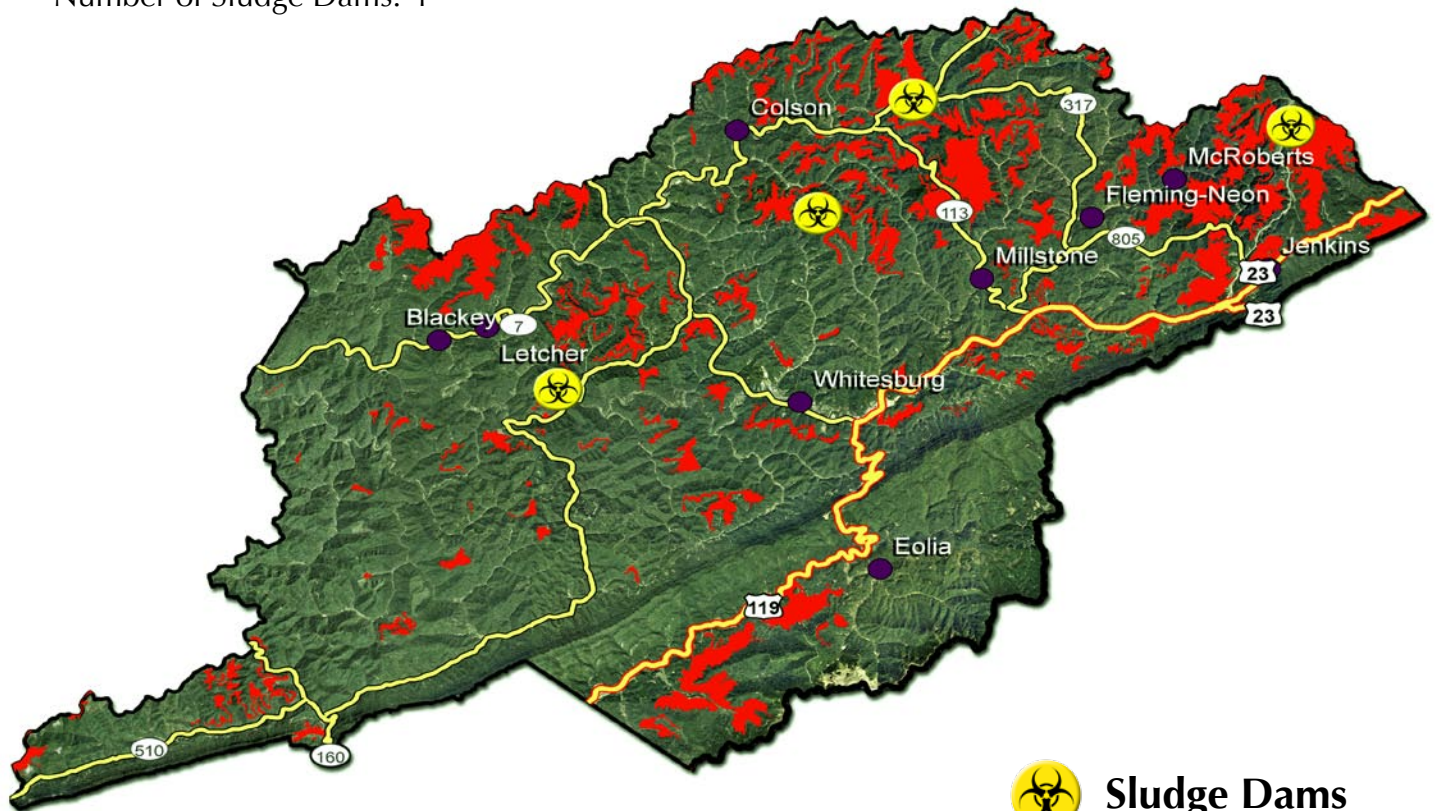


# Letcher County

More than **20%** loss in population since 1980

Total Acreage of County: 217,000  
 Total Acres Surface Mined: 26,000  
 Number of Sludge Dams: 4



 Sludge Dams

 Strip Mines

## Quality of Life Indicators

	1980	2005	% Change
Total Population:	30,717	24,504	-20.2%
Total Coal Production (mst)	5,039,276	9,662,262	+ 91.7%
Average Income as % of US average	61%	62%	+ 1.6%.
Mining Jobs	2517	1423	-43.5%
Mining Jobs as % of total jobs	35.1%	17.7%	-60.1%

Percent Living in Poverty in 2000: 31.8% (US Average: 16.5%)  
 Percent Unemployed in March, 2007: 7.6% (US Average: 4.5%)



**KENTUCKIANS FOR THE COMMONWEALTH**  
*Action for Justice*