



KENTUCKIANS FOR THE COMMONWEALTH

Action for Justice.



Fighting for Tax Justice in Kentucky since 1981





Victory!!!

**No special
sessions in 2017**



**How did
we do it?**



2017 Tax and Pension Timeline

2015 – Kentucky Together Coalition formed

2016 – General Elections: Art Laffer & GOP sweep of House

KFTC launches Campaign For Our CommonWealth

Feb. 8th – Bevin’s State of the Commonwealth Address

KT and allies begin to organize against grocery and med tax

April 5th – Governor’s office starts looking for legal firm to craft tax reform proposal

August – Tax special session called off, calls for pension ss

KPPC and allies begin hosting dozens of town halls

Oct. 18th – “Keeping the Promise” proposal unveiled

Nov. 1st – Hundreds rally at Capitol against pension proposal

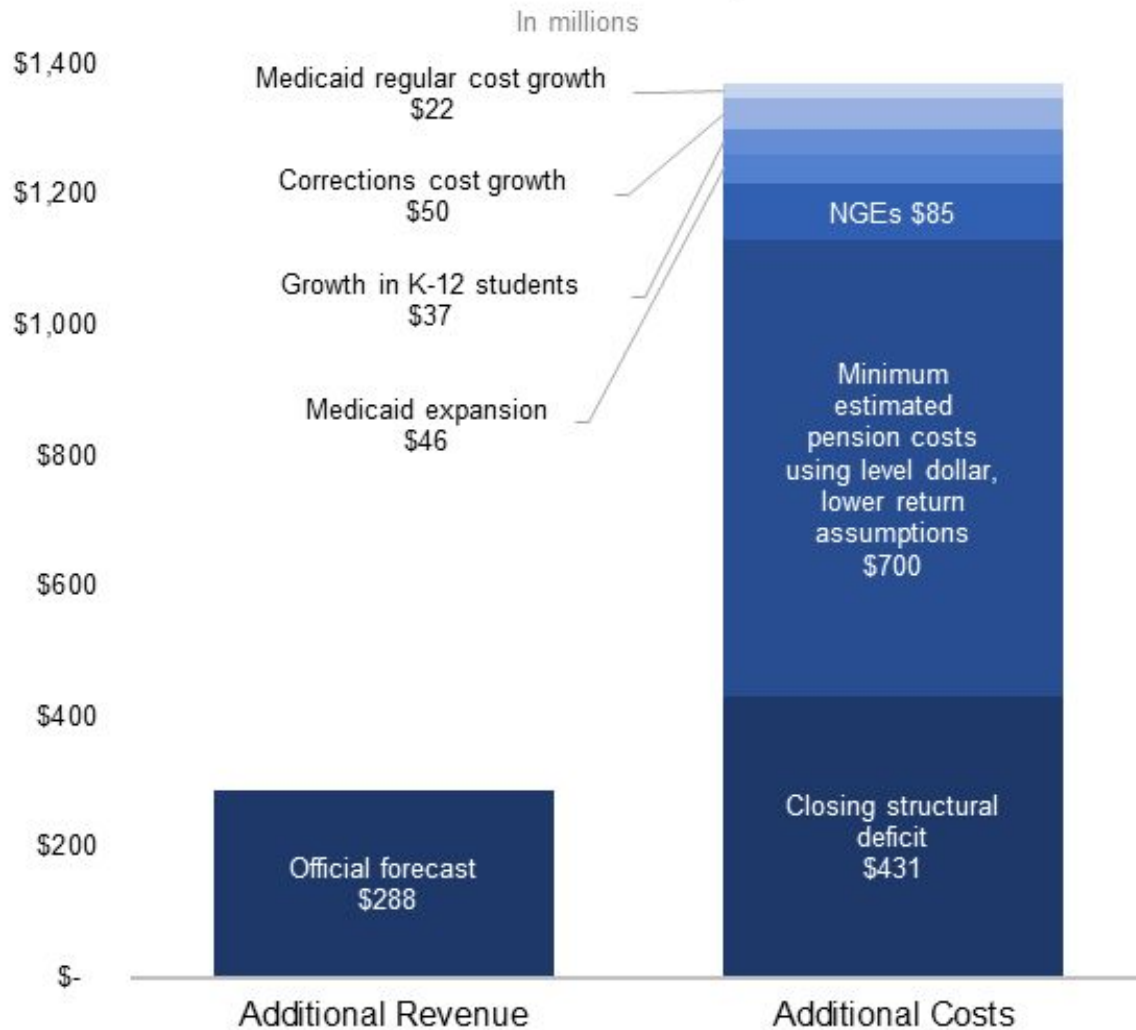
Nov. 10th – Study shows KY GOP’s pensions proposal would cost billions more than current pension system

Dec. 18th – Special session on pensions runs out of time



Turning our attention to 2018

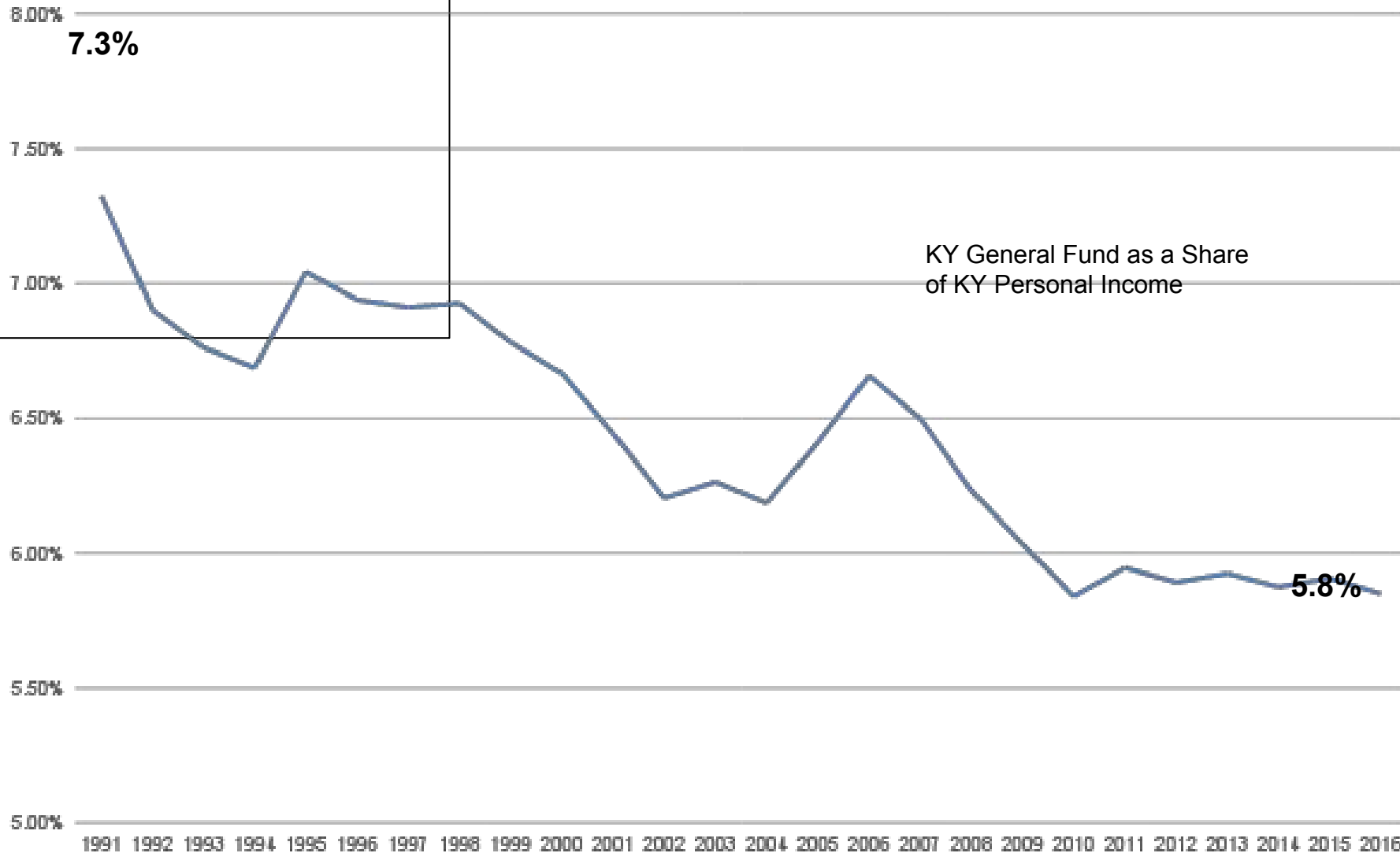
New Revenue Far Short of Expected Costs



Source: KCEP analysis of Kentucky state agency data found throughout "Commonwealth at Risk: A Preview of the 2018-2020 Kentucky State Budget."

We Have Less Than We Did

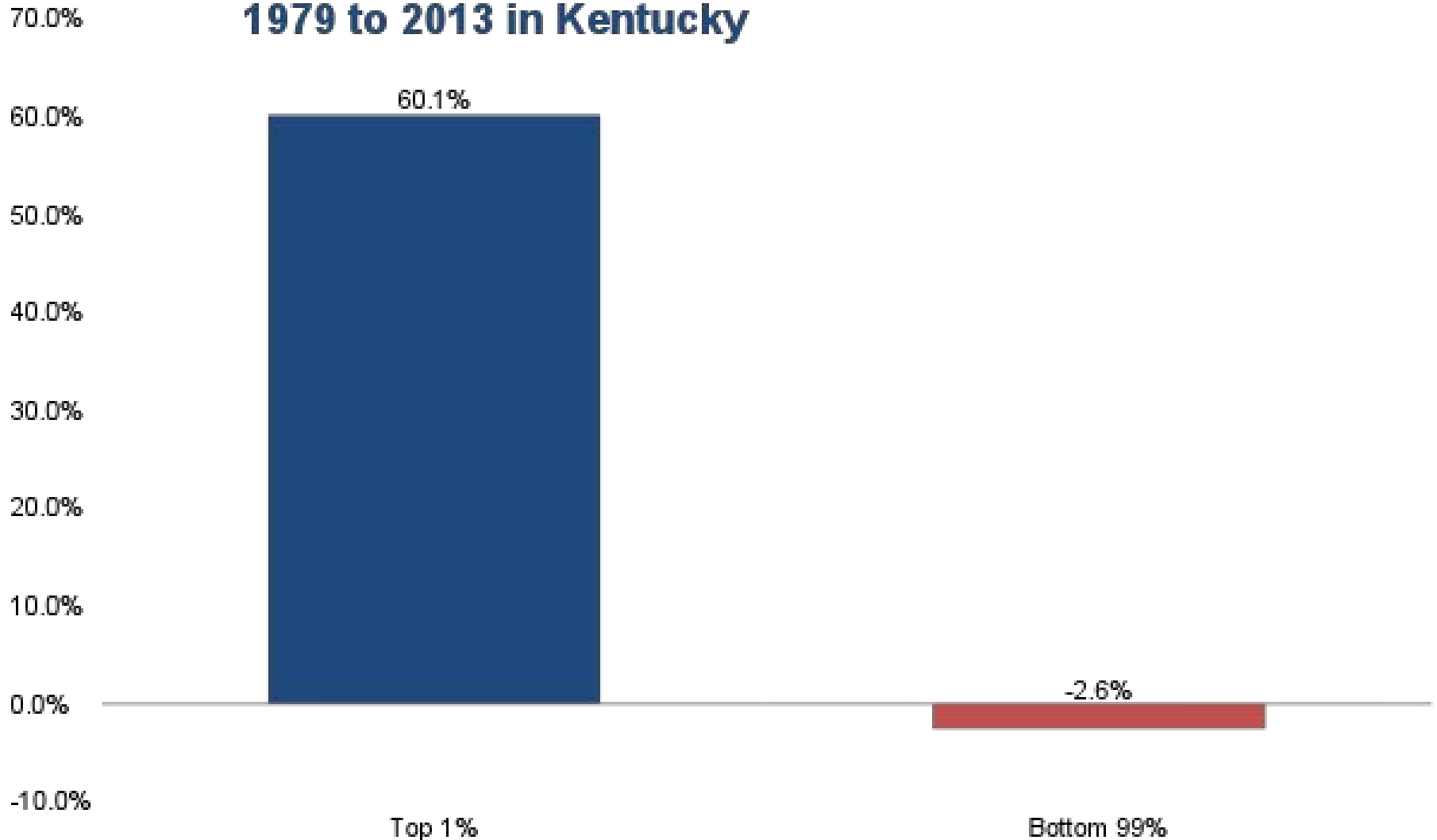
General Fund Eroding Relative to Economy





Economic Growth Goes to Those at the Top

**Real income growth for the top 1% and the bottom 99%:
1979 to 2013 in Kentucky**



Find Out More



www.KentuckyTogether.org

 Kentucky Together

 @ky_together



www.KyPolicy.org

 KyPolicy

 @kypolicy

KCEP Annual Conference – January 26

www.KyPolicy.org/events



The State of Our Commonwealth

Cuts to Selected Agencies 2008-2016	State funding change (inflation-adjusted)
Kentucky Arts Council	-47%
Kentucky Educational Television	-32%
Libraries	-26%
Public Health Departments	-16%
Environmental Protection	-27%
Community College System; Universities	-27%; 28%
Nature Preserves Commission	-19%
Vocational Rehabilitation	-22%



**What are we
going to do
about it?**

How will we win?



2018 Budget, Tax, Pension Timeline

Jan. 2nd – General Assembly begins

Jan. 2nd - Jan. 4th – KFTC members lobbying in Frankfort

Jan. 6th – KFTC strategy meeting in Lexington

*Jan. 16th – State of the Commonwealth/Budget Address

Jan. 26th – KCEP Annual Budget Conference

Jan. 30th – Candidate filing deadline

Feb. – Revenue Raising Summit

Feb. 26th – Last day for new House bills

Feb. 28th – Last day for new Senate bills

Mar. 29th - April 9th – Governor's veto window

April 12th & 13th – Final days of 2018 KY GA

May 22nd – Kentucky Primary Elections

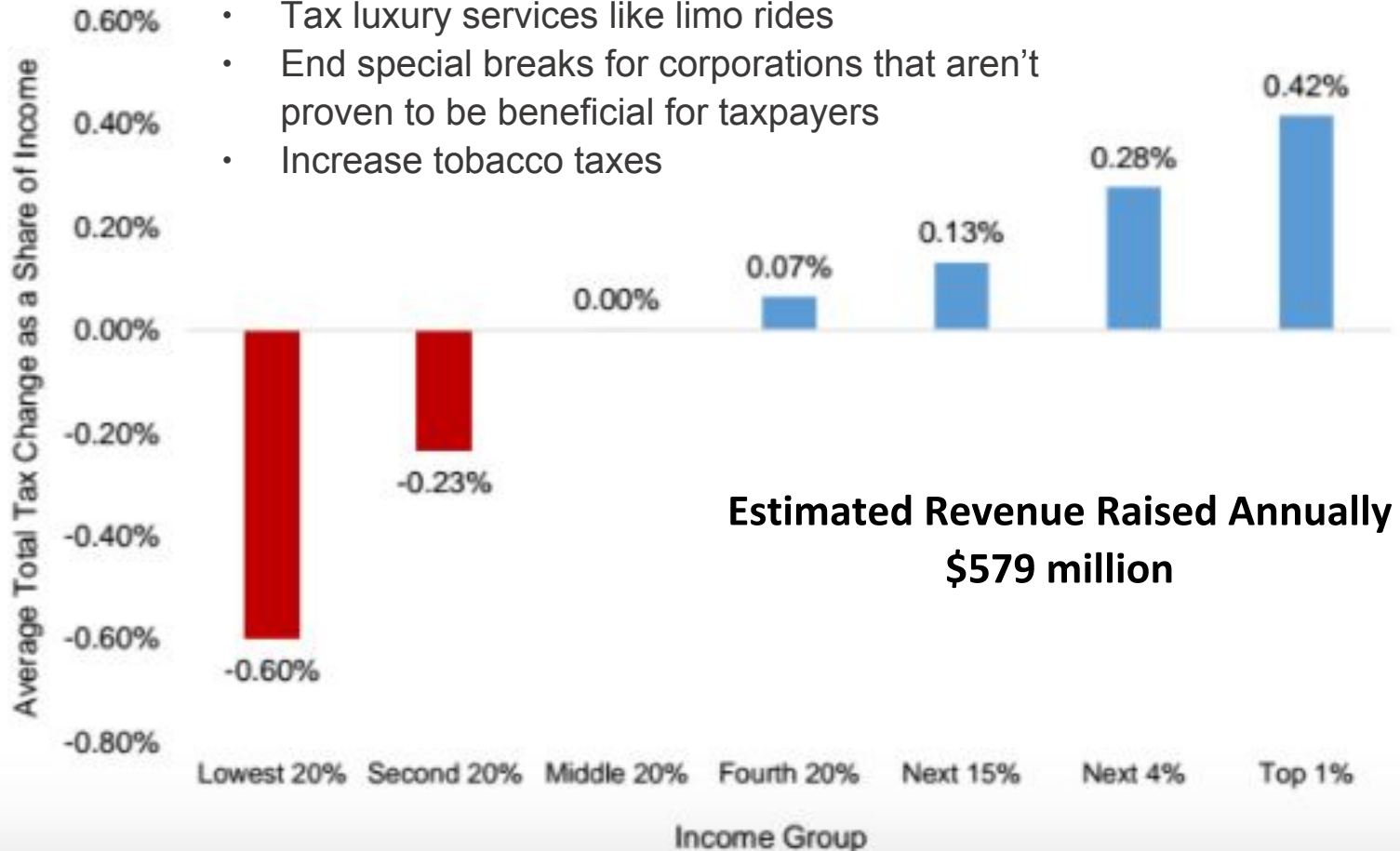
Nov. 6th – Kentucky General Elections

*Possible special session on state taxes



Just and Sustainable Tax Reform: KY Forward Plan Would Make Kentucky's Tax System Fairer

- Modernize income tax brackets and make the income tax more progressive
- Reduce pension exclusion for wealthy retirees
- Tax luxury services like limo rides
- End special breaks for corporations that aren't proven to be beneficial for taxpayers
- Increase tobacco taxes





Can you commit to...

1. Attend an upcoming event/get involved

- **Jan. 2nd - 4th – Lobbying in Frankfort**
- **Jan. 6th – Strategy Meeting hosted by KFTC in Lexington from 10:30-4:30**
- **Jan. 26th – Annual Budget Conference hosted by KCEP in Lexington from 9:30-3:30**
- **Early Feb. – Revenue Raising Summit**



Can you commit to...

2. Tell your story leading up to Jan. 16th

- Letter-to-the-Editor
- Op-Ed
- Facebook Live

For social media, use the hashtags:

#KYGA18

#FindFundingFirst

#DontCutItFundIt

#WeAreKY



Can you commit to...

3. Host/Attend a Budget Address Watch Party

- **Could be at your house**
- **Could be in a public place**
- **Invite your networks**
- **Food is always a big draw!**
- **Have a conversation and take collective action**



Can you commit to...

4. Become a member of KFTC





Get Involved and Learn More

Check out our website

<http://kftc.org/campaign-our-commonwealth>

Follow us on social media



Contact me @

Tyler Offerman

tyler@kftc.org

859-209-0815