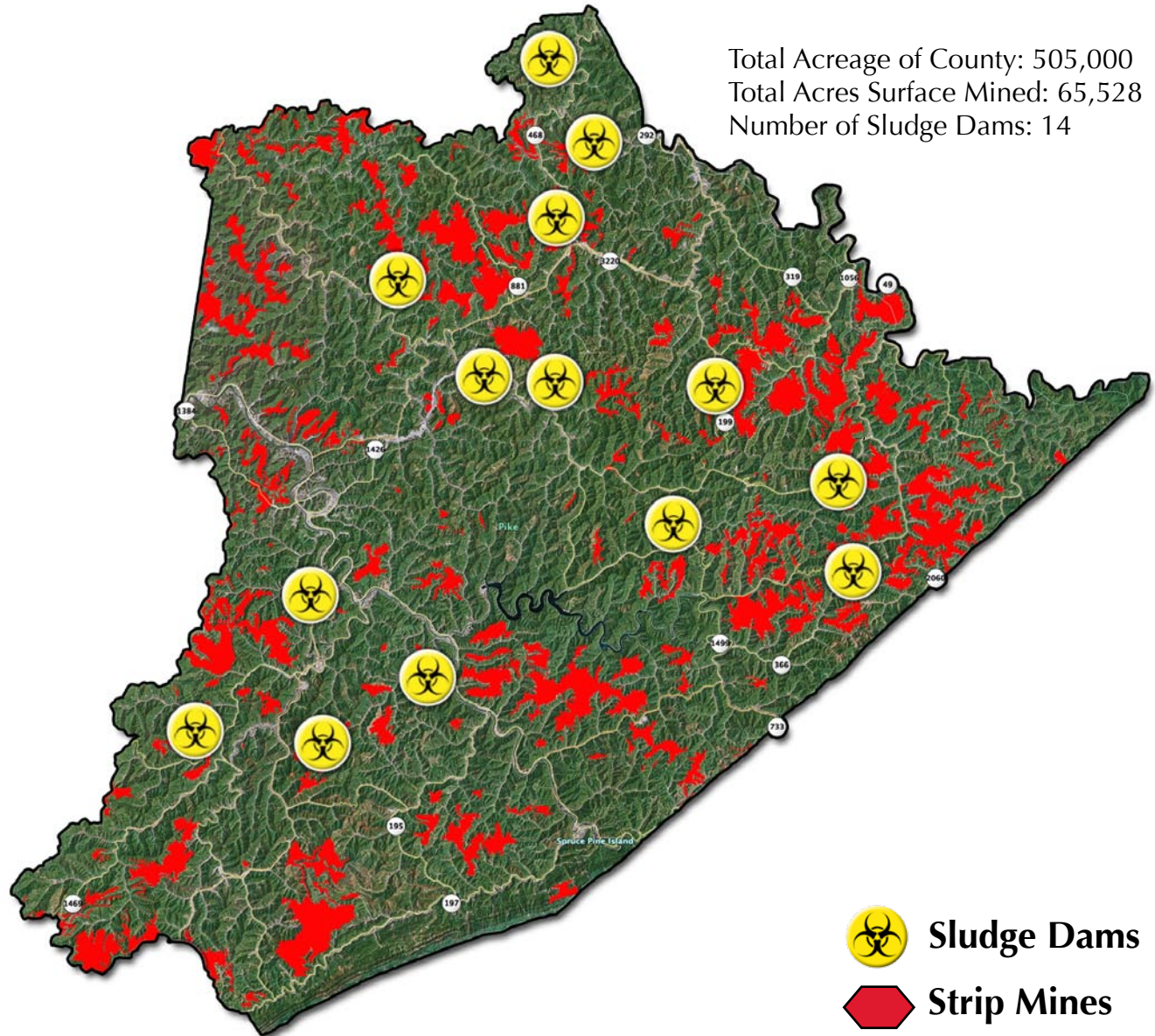


# Pike County

More than **65,000** acres strip mined



## Quality of Life Indicators

	1980	2005	% Change
Total Population:	81,131	66,754	-17.7%
Total Coal Production (mst)	25,078,407	28,375,106	13.1%
Average Income as % of US average	86%	69%	-27.8%
Mining Jobs	8853	4806	-45.7%
Mining jobs as percentage of total jobs	36.8%	16.1%	-56.3%

Percent Living in Poverty in 2000: 25.4% (US Average: 16.5%)  
 Percent Unemployed in March, 2007: 6.3% (US Average: 4.5%)



**KENTUCKIANS FOR THE COMMONWEALTH**  
 Action for Justice